

WHEN EXTERIOR  
AND INTERIOR MEET

lyongo architecture

Sas's Styling & Stuff

## WELCOME

lyongo architecture and Sas's Styling & Stuff joined forces to create spaces that seamlessly blend architectural innovation with thoughtful, personalized interior design. This collaboration highlights the strengths of both teams: lyongo architecture's expertise in creating functional and aesthetically striking spaces, and Sas's Styling & Stuff's mastery in crafting interiors that exude warmth, character, and style.

Together, we transformed these apartments, ensuring that the exterior design flows naturally into interiors that are both beautiful and highly livable. Every detail from layout optimization to material selection and styling was approached with a shared vision of excellence and a commitment to enhancing the way people experience their homes. And all this with predominantly second hand furniture.

This partnership is a celebration of creativity, craftsmanship, and the belief that great design is a dialogue between space and soul.



## SMITHPLEIN 12

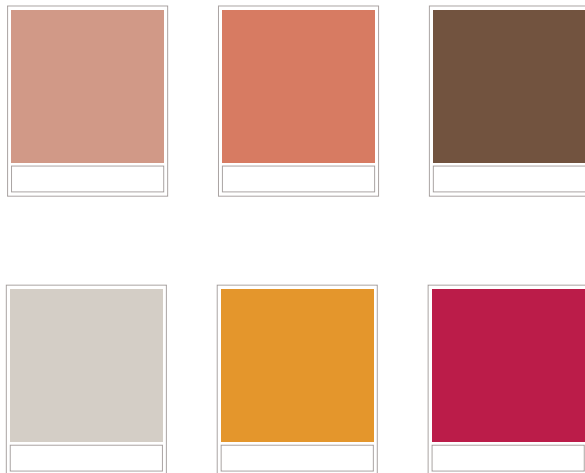
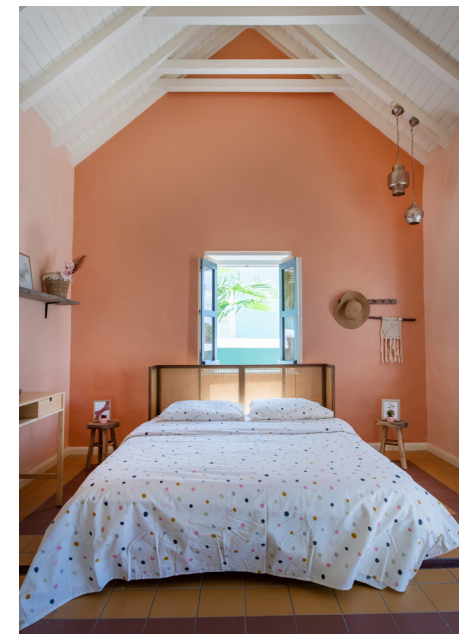
Iyongo architecture embraced the challenge of preserving two historic monuments while reimagining their purpose for contemporary needs. The project demonstrates a deep respect for heritage, turning two monuments into a warm, character-filled apartment and the other into a dynamic office space.

This restoration balanced architectural conservation with functional adaptation, carefully maintaining original details while introducing thoughtful modern interventions. The result is a seamless integration of the past and present, ensuring these landmarks continue to contribute to the urban fabric. Smithplein 12 stands as an example of how careful restoration can create spaces that honor their history while remaining vibrant and relevant in today's world.

## ATHMOSPHERE

This apartment radiates warmth and personality, brought to life through a thoughtful blend of natural materials, earthy tones, and vibrant accents. The terracotta-pink walls set a soothing backdrop, while pops of magenta, mustard, and fuchsia infuse the space with energy and joy. Natural wood elements, ranging from the dark, rustic cupboard to the light rattan chair, add depth and texture, connecting the interior to its natural surroundings.

With its vaulted white ceiling, abundant natural light, and carefully curated details, the apartment balances openness with coziness. It's a space that feels both stylish and approachable, inviting relaxation while showcasing creativity and charm.















## RONDEKLIPWEG

On a spacious lot with an existing house, a thoughtfully designed two-bedroom apartment was built to maximize both functionality and aesthetic appeal. This newly constructed space complements the existing home while providing modern living accommodations.

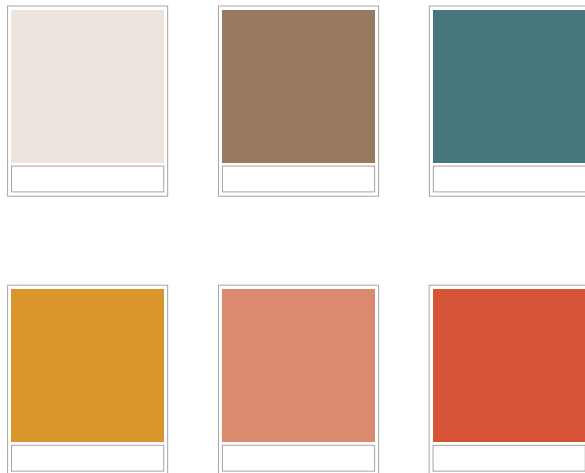
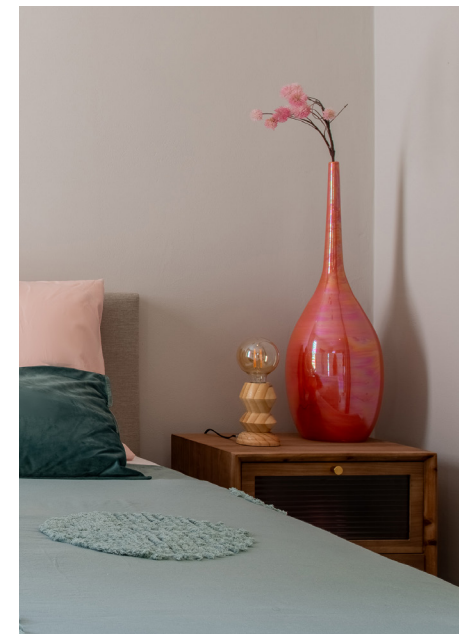
With a good orientation to the wind and windows and doors in the right positions the north east trade wind flows gently through this apartment. This together with the shade created by overhangs and the insulation of the roof create a pleasant indoor climate.

This project demonstrates how new builds can seamlessly integrate into established properties, enhancing the usability of the lot while respecting its original character. The apartment offers a harmonious blend of privacy, modern amenities, and connection to outdoor living.

## ATHMOSPHERE

This apartment blends modern simplicity with natural elegance, creating a space that feels fresh, welcoming, and full of personality. Neutral tones in the walls and floors establish a serene backdrop, while vibrant accents of orange and teal bring energy and warmth to the design.

The earthy textures of the woven rug and wooden accents add depth and character, offering a grounding contrast to the sleek, glossy green backsplash in the kitchen. Sunlight streams in through large windows, enhancing the sense of openness and connection to the outdoors.























[www.lyongo.com](http://www.lyongo.com)

